

## INSTALLING THE GEOTAB GO7 DEVICE

Before installing your GO7™ device, please document your serial number by placing the provided sticker in the labeled space on the right. You will need this information at a later time to verify your installation.

1. Ensure no dash warning lights are on in the vehicle while it is running, prior to installing the device.
2. Verify device compatibility with your vehicle type with your reseller.

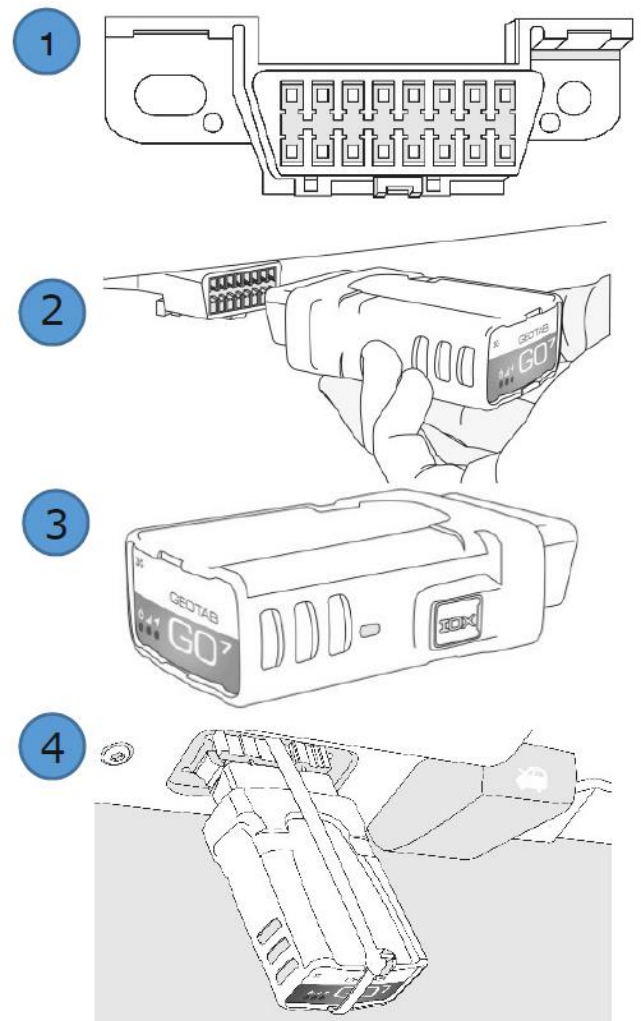
### STEPS REQUIRED

**Step 1:** Locate the vehicle's engine diagnostic port typically found in the driver's area at or below knee level. Note: Commercial vehicles with diesel engines use a different connector system. Contact your reseller for diesel connector applications or for extension harnesses should it be necessary to locate your GO7™ device away from the engine diagnostic port location.

**Step 2:** Align the receiver end of the GO7™ device with the engine diagnostic port and simply push in place, ensuring that the device is secure. You will hear 6 quick beeps and all three lights on the GO7™ device will flash briefly.

**Step 3:** Start the vehicle and allow it to run for approximately 3 minutes. During this time period you will notice the Red LED will power on and illuminate on the face of the device. Shortly afterwards the Green and Blue LEDs will illuminate as the device links up with the cellular and GPS networks. This initial start-up may take several minutes to complete, and assumes the vehicle is parked outdoors.

**Step 4:** Once all three LED lights have come on, secure your GO7™ device using the supplied Geotab zip tie. Verify Your Installation: <http://myinstall.geotab.com>



**To verify your installation, please call 1300 653 395 and select the INSTALL option.**